



REGIS

RESOURCES LTD

McPhillamys Gold Project

McPhillamys Community Consultative Committee

Monday 20 November 2023

Agenda

1. Welcome, introduction and apologies
2. Declaration of interest
3. Business arising from previous minutes
4. Previous meeting minutes
5. Correspondence
 - Questions from members
6. Update on project
7. General business
 - Discussion regarding Social Impact Management Plan consultation
 - Feedback on Chairing
8. Next meeting



Correspondence and questions from members

Question on notice

Could Regis please provide a breakdown of the contents in the ore to be mined that won't be processed?

In particular, the contents/makeup of the material which will form the waste rock walls, amenity bunds, and top soil?

The profiles for waste rock are presented in Table 4.1.4 (pp. 85-86) of the McPhillamys Gold Submissions Report (2020), see next slide.

NOTE: Slide 5 was updated after the meeting to show names of all chemical elements.

Table 4.14 Metal concentration profiles for waste rock, ore and tailings

Element	Waste rock		Ore		Tailings
	Median (mg/kg)	90th percentile (mg/kg)	Median (mg/kg)	90th percentile (mg/kg)	Maximum (mg/kg)
Ag SILVER	0.26	1.46	0.46	2.47	0.89
As ARSENIC	41	172	53	196	160
Ba BARIUM	70	160	70	120	190
Be BERYLLIUM	0.12	0.30	0.07	0.12	0.15
Cd CADMIUM	0.11	3.67	0.08	2.57	2.50
Cr CHROMIUM	9	76	2	7	175
Cu COPPER	207	510	430	1,446	635
Fe IRON	59,300	74,660	70,900	87,240	70,600
Hg MERCURY	0.02	0.50	0.04	0.34	0.36
Mg MAGNESIUM	4,900 14,900	23,800	13,200	22,920	20,000
Mn MANGANESE	1,290	3,580	1,670	3,300	1,840
Ni NICKEL	7.7	38.6	5.3	8.0	90.0
Pb LEAD	13.0	115.5	18.6	64.3	209.0
Sb ANTIMONY	1.25	3.24	1.44	2.66	2.90
Se SELENIUM	2.20	12.30	6.80	15.42	7.50
Zn ZINC	96.0	1,160.0	88	545.2	707

Notes: For waste rock and ore, the median concentration profile was adopted for the amended AQIA while the 90th percentile profile was adopted for this response to EPA submission.

Parliamentary Inquiry comment

Submitted to CCC by Daniel Sutton on behalf of the BHPG

Regis was asked at if all 260 jobs would be in Blayney specifically as the person who asked was familiar with Blayney.

Regis replied “they are local jobs”. This is misleading to the question which was very specific to the town of Blayney which was not accurately responded to.

Regis stated that the response provided to the Inquiry by the Regis employee is factually correct and not misleading – all 260 jobs are either at the Blayney administration office or at the Kings Plain project site, nowhere else



Project update

Project status

☞ Current work:

- ☞ Preparing Definitive Feasibility Study for Final Investment Decision
- ☞ Ongoing preparation of environmental management plans
- ☞ Modification 1 scoping letter submitted to DPE, environmental assessment underway
- ☞ Parliamentary Inquiry – McPhillamys appeared, response documents prepared (transcripts and submissions), Final Report due 15 December 2023
- ☞ Section 10 – awaiting Ministerial determination
- ☞ Investigations (internal & external) - nil
- ☞ Complaints - nil

Community engagement

- Kings Plains negotiated agreements
- Update meetings and phone calls with neighbours
- Exploration discussions with property licencees
- Community Investment – Christmas round
- Community Newsletter #24, fortnightly advertisements



Environment

- Numerous field surveys being undertaken for MOD1:
 - Aboriginal cultural heritage
 - Historic heritage
 - Biodiversity (flora, fauna, aquatic ecology)
 - Land contamination
- Continued consultation with EPA re proposed monitoring network and environmental management plans
- Monitoring equipment – discussions with private landowners continuing



MGP Environmental Management Plans

- **✓ Environmental Management Strategy**
- Noise and Blast Management Plan*
- Air Quality and Greenhouse Gas Management Plan*
- Social Impact Management Plan*
- Rehabilitation Strategy*
- Water Management Plan
- Biodiversity Management Plan
- Heritage Management Plan
- Traffic Management Plan
- Bushfire Management Plan
- Hazard and Operability Study
- Final Hazard Analysis
- Transport of Hazardous Materials Study
- Emergency Plan
- Safety Management System
- Hazardous Materials Management Plan
- Water Supply Pipeline CEMP
- Apiary Monitoring and Management Plan

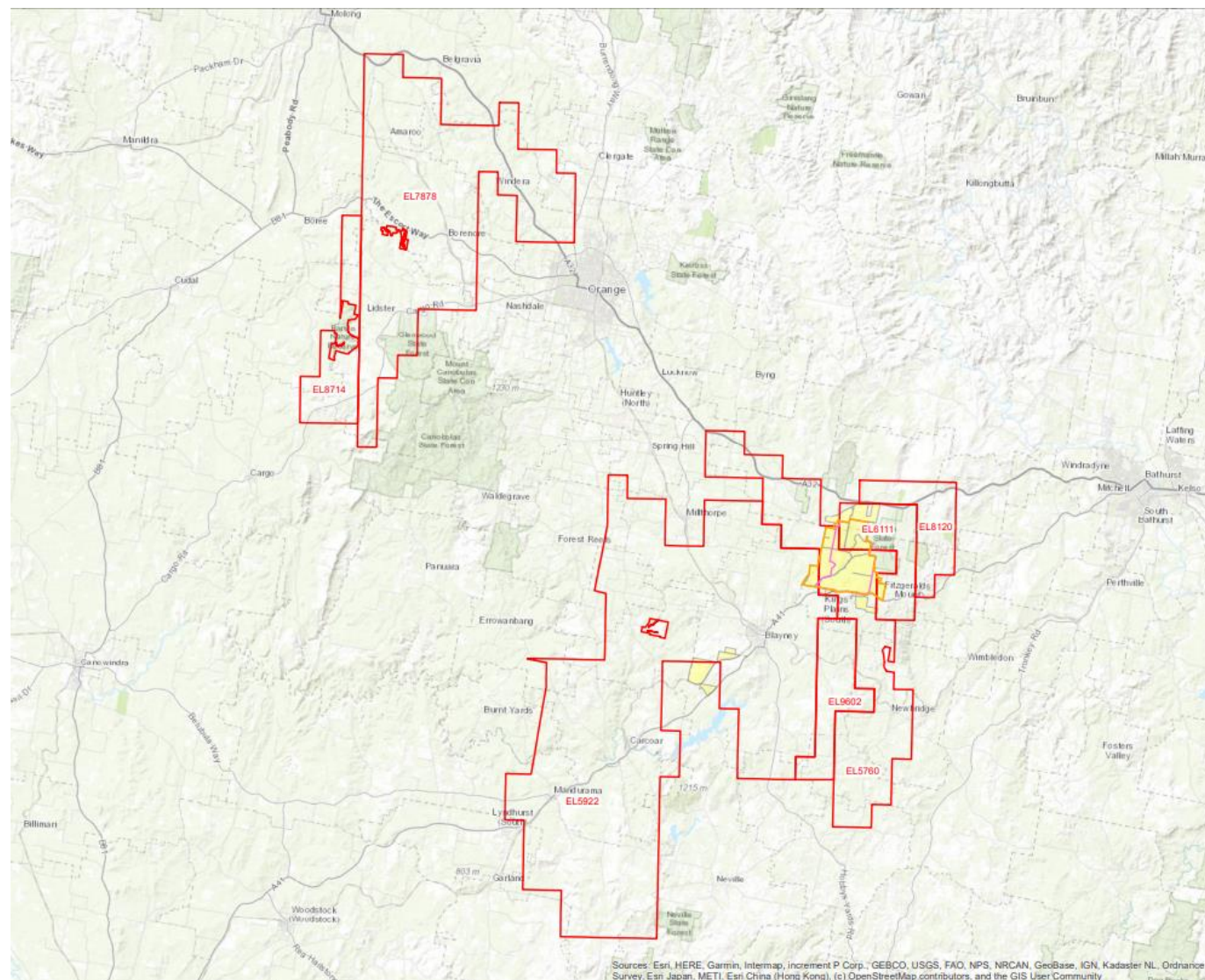
**Must be prepared in consultation with the CCC*
Bold font indicates plan has been approved

Exploration

- Pre-mining drilling work (geology)
- First round mid-Nov to Christmas on Regis-owned properties
- Up to four 85mm core holes up to 800m using diamond drilling
- Each hole takes up to two weeks
- Holes are a long way from houses and unlikely to be heard
- Second round early 2024, Regis will advise affected people and broader community.



Tenement acquisition EL9602





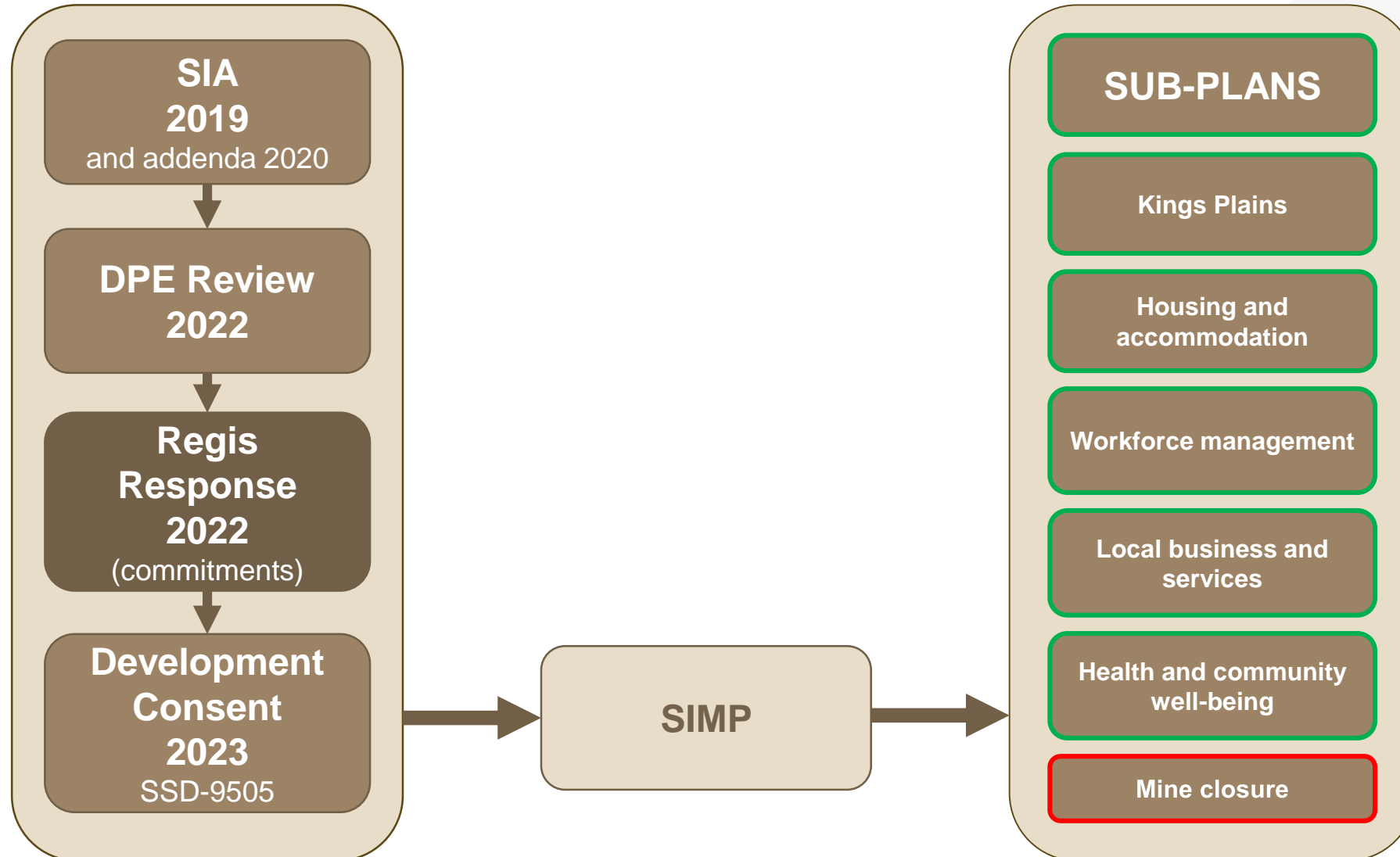
Social Impact Management Plan

Why are we consulting about the SIMP?

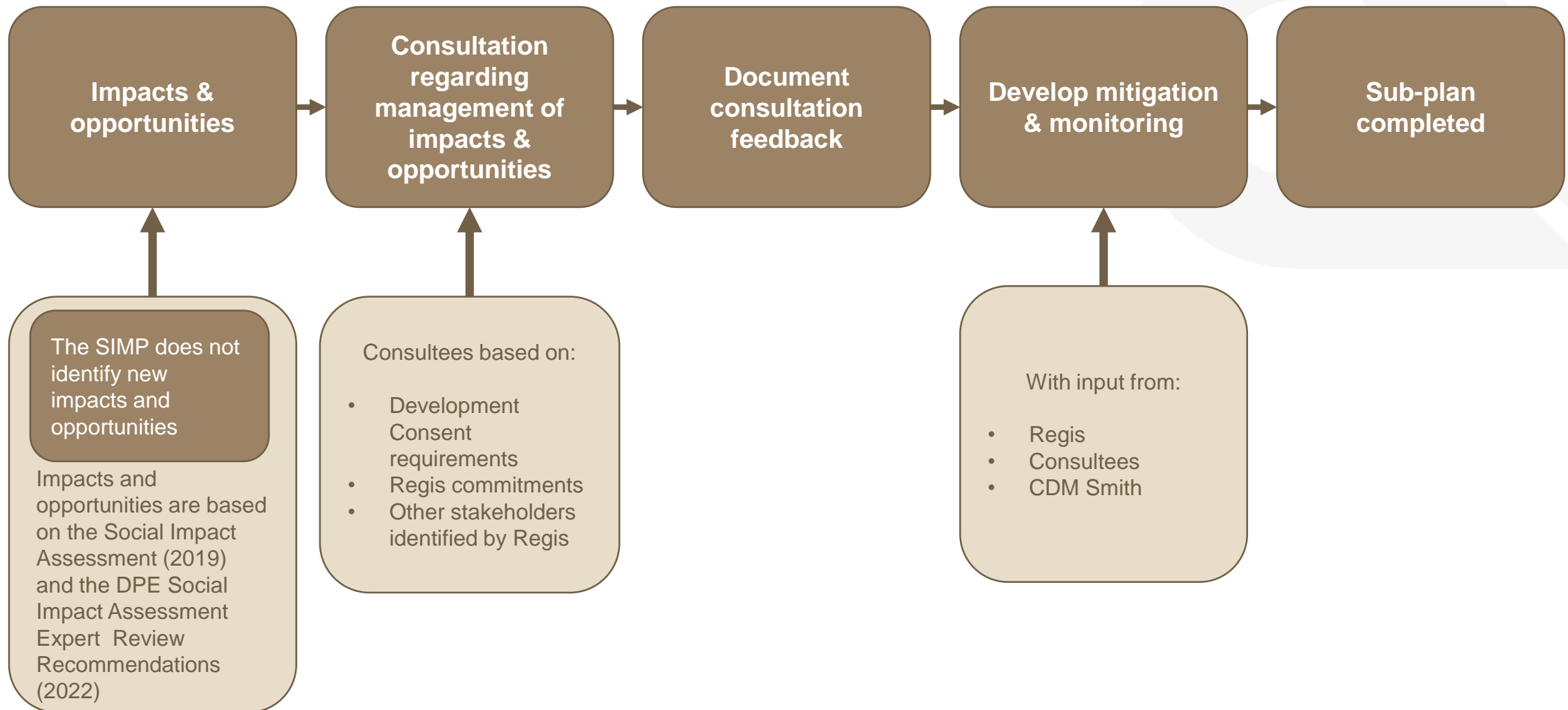
- Condition B101 requires a SIMP
- It must describe measures that will enhance positive impacts and manage and mitigate negative impacts
- Those impacts have already been identified (Social Impact Assessment 2019 & 2020, DPE Review and Regis response)
- Specific areas must be covered in sub-plans (next slide)



Social Impact Management Plan (SIMP)



Overview of content of each sub-plan





Further information:

Kath Logan | External Relations Manager
klogan@regisresources.com 0416 083 884