



REGIS RESOURCES LTD



McPhillamys Gold Project

CCC

Community Consultative Committee

December 2018

Agenda

1. Apologies
2. Declaration of Pecuniary or other interests
3. Committee Membership (Each member to do a brief introduction)
4. Code of Conduct
5. Correspondence
6. McPhillamys Overview
7. Other agenda items?
8. General Business
9. Next Meeting (Venue,day,time)



Community Consultative Committee

- Regulatory requirement for EIS (EARs)
- Consists of Independent Chairperson, 7 Community representatives, Council representatives, 3 Regis representatives
- Provides formal communication platform for the broader community
- Generally meets bimonthly or quarterly
- The 7 community members ideally represent a cross section of the community and enables them to disseminate information on the project to the community



Committee Members

<i>Independent Chairperson:</i>	David Johnson		
<i>Community Representatives:</i>	Elizabeth Russ	<i>Council Representatives:</i>	Rebecca Ryan Blayney Council
	Miles Hedge		Heather Nicholls Cabonne Council
<i>Stakeholder Group Representatives:</i>	Peter Hildenbeutel		Graeme Hanger Bathurst Council
	Jim Newman	<i>Regis Representatives:</i>	Rod Smith
	Evan Leitch		Tony McPaul
	Daniel Sutton (BHPG)*		Andrew Wannan
	Cyril Smith (ORWSA)*	Chris Roach	Alternate
<i>Alternative Representatives:</i>	Bob Russ	<i>Administration:</i>	Stacey McFawn
	Tom (Edward) Williams		
<p><i>BHPG - Belubula Headwaters Protection Group Inc</i> <i>ORWSA - Orange & Region Water Security Alliance Inc</i></p>			



Conduct of Committee Members

All members, including the independent chairperson and alternative representatives, must sign a code of conduct agreement before they join a Community Consultative Committee and comply with this code of conduct while they are a member.



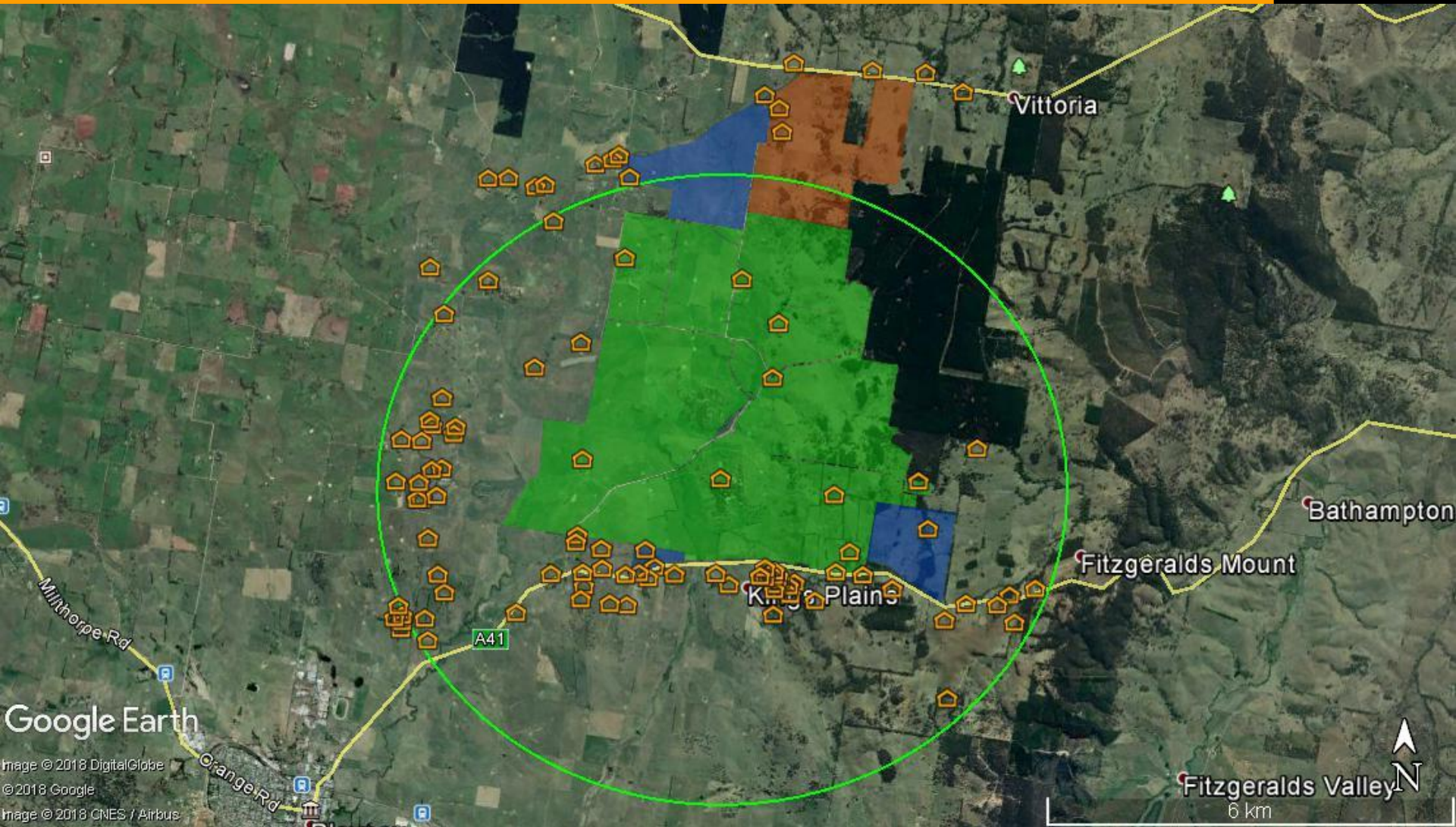


REGIS RESOURCES LTD



McPhillamys Gold Project Project Update

McPhillamys District



Community Consultation

- Consultation is ongoing
- Positive, neutral and negative viewpoints
- Nearest neighbour is 1.2km from pit crest
- Community Information Sheets and Community Open Days
- Community Consultative Committee (CCC)
- Councils, Local Members, Interest Groups briefed
- Social Impact Assessment meetings ongoing



EIS Status

- Lead consultant change – Corkerys to EMM
- Andrew Wannan owners rep for Regis
- Studies are underway
- Noise, air quality, water management studies are key factors in finalising layout and mining schedule
- Target completion date is first quarter of 2019



Regulatory Approvals

- Submission of PEA to DPE for issuing of EARs
- Submission of EIS to DPE for adequacy
- Review of EIS by various regulators
- Exhibition of EIS for minimum of 30 days
- Submissions Received
- IPC first hearing?
- Regis Responds to Submissions
- IPC Second hearing?
- Determination
- Average approval timeframe is approximately 12 months





Stage 1 resource drilling before and after rehabilitation

TENURE

