



REGIS RESOURCES LTD

**McPhillamys Gold Project
Community Consultative Committee
28 March 2022**



Agenda

1. Apologies
2. Declaration of pecuniary or other interests
3. Business arising from previous minutes
4. Correspondence
5. McPhillamys Gold Project update
6. Other agenda items
7. General business
8. Questions
9. Next meeting

McPhillamys Project Activities

3

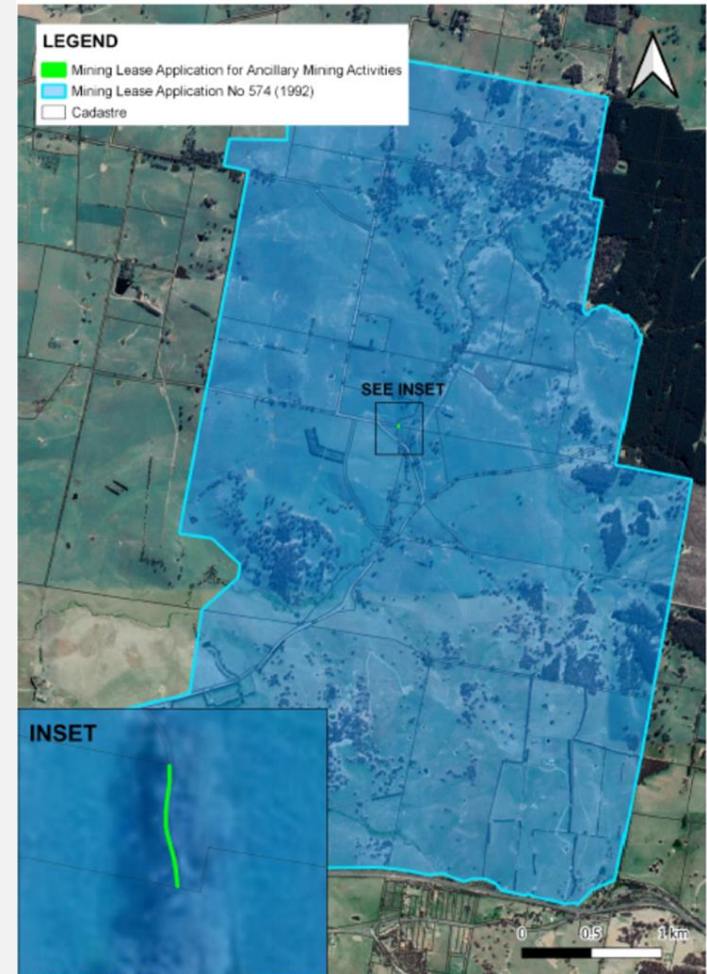
- COVID-19 restrictions
 - Office has reopened
- Ongoing environmental monitoring
- Surface Water Licencing
- Construction water supply investigations ongoing
- Pipeline geotechnical investigations
- Landowner Agreements ongoing
- Visual screening ongoing
- Weed management on Regis properties



McPhillamys Project Activities

4

- Section 9 Application (mine) – Not granted.
- Section 10 Application (mine) – Presentations submitted, assessment in progress.
- Section 10 Application (pipeline) – Representations submitted, assessment in progress.
- MLA 595 – Right to Negotiate (Native Title)
 - Native title cannot be demonstrated to be extinguished
 - RTN commenced January 2022, ongoing.



Relative Location of Proposed AMAs to Proposed Mining Lease for Minerals

Community Engagement

5

- Native tree giveaway - McPhillamys neighbours
- 1,300 trees (from locally sourced seeds) grown by Central West Landcare and Skillset Land Works



Community Support

6

- 2022 Blayney Show major sponsor



- Donation to Charles Sturt University School of Rural Medicine



Communication

7

➤ Community Information Sheet #16 December 2021

➤ Community Information Sheet #17 March 2022

➤ Fortnightly updates - Blayney Chronicle/email



McPhillamys Gold Project

Community Information Sheet No. 17 March 2022

Free trees for neighbours and Kings Plains residents

Kings Plains residents and McPhillamys neighbours are gearing up for the autumn planting season following our annual native tree giveaway, in February.

Regis Chief Operating Officer, Stuart Gule was on hand to meet residents as they collected their trees, which were grown from seeds collected from local properties.

Over 1400 trees were given away including Yellow Box, Apple Box, Blakely's Red Gum, Mann Gum, Red Stringy Bark and Broad-leaf Peppermint.

The trees were grown by staff, volunteers and interns at local training organisation, Skillet Land Works and Central Tablelands Landcare.



Above: Regis Chief Operating Officer Stuart Gule and Community Consultative Committee member Peter Hildenbrandt.

Far Left: Local residents, Gillen and Ken Haylen, collecting their trees—with their dog, Sal, along for the ride.

Left: Guyong Road resident, Paul Little, with one of the trees from last year's giveaway—now over a metre in height after a year of good rainfall.



McPhillamys Project = Jobs + Business Growth

The McPhillamys Gold Project will create hundreds of new jobs for Blayney and the Central West. It will also bring all sorts of opportunities for existing and new businesses in the local area.

To find out more about the Project opportunities please register for our updates and mailing list. Call us on 02 6368 4100 or send your contact details to: new_enquiries@regisresources.com

McPhillamys Gold Project - Community Information Sheet No. 17



McPhillamys Gold Project



Project Update

Kath Logan
External Relations Manager

Alongside the tragic events of that summer, there were also some amazing displays of community spirit, bravery and sacrifice. Mostly by the brave firefighters who stepped up to help save the properties and homes that were impacted.

Members of the Kings Plains RFS Brigade were amongst those who took time off work to fight the fires, travelling to places including Ebor, Cooma, Murrumbidgee, Dorrigo, Kempsey, Rylstone and Cudgewong.

Last week they were thanked by RFS Canbolas Zone Acting District Manager, Brett Bowden, who presented the brigade with the Commissioner's Unit Citation for Service, to mark the group's contribution.

Regis employee and local farmer, Sarah Parlett was one of six volunteers recognised for outstanding service. Between them they completed 17 five-day deployments and nine 12-hour shifts fighting the fires at Rylstone.

Our appreciation goes to members of the Kings Plains RFS who volunteered in 2019-2020—and for many other fire events locally and around the state. Thanks for keeping us safe.

Regards,
Kath Logan
External Relations Manager
Regis Resources



Left: A District Manager Brett Bowden (Canbolas Zone) with Regis Sarah Parlett.

Centre: Kings Plains Brigade Captain Peter Williamson.

Right: The certificate at Murrumbidgee, taken by Sarah Parlett during her RFS deployment in 2019.

Regis Resources McPhillamys Gold Project Office — 57 Adelaide St, Blayney NSW
Ph: 02 6368 4100 email: new_enquiries@regisresources.com www.mcphillamysgold.com



McPhillamys Gold Project



Project Update

Kath Logan
External Relations Manager

Looking out for wildlife

Spring and summer are a busy time for WIRES and other animal rescue services, so please keep an eye out, especially on our local roads.

If you do find any injured native animals and it is safe to do so, gently place a towel over the animal, put it in a ventilated box with a lid and leave it in a quiet place to minimise stress.

Reptiles, bats, kangaroos and large birds should be left where they are until a qualified handler can help you.

Ring WIRES (Wildlife Rescue) on 1300 094 737 and they will refer you to a specialist carer or a vet in your area.

COVID has put vet clinics under stress due to staff absences so please contact WIRES first. They will refer you to a vet clinic that has capacity to take the animal.

To find out more about the great work WIRES does, and animal rescue tips, check out the WIRES website at: <https://www.wires.org.au>

Working during COVID

A reminder that our Blayney office is still operating though most of our team continue to work from home. You can always contact us on (02) 6368 4100 or via email at: new_enquiries@regisresources.com

Regards,
Kath Logan
External Relations Manager
Regis Resources



How to help WIRES care for wildlife.

WIRES gratefully accepts donations and they welcome people wanting to volunteer.

For more information visit these links:
Donate: <https://www.wires.org.au/branch/donate/central-west>
Volunteer: <https://www.wires.org.au/rescue/become-a-rescuer>

Regis Resources McPhillamys Gold Project Office — 57 Adelaide St, Blayney NSW
Ph: 02 6368 4100 email: new_enquiries@regisresources.com www.mcphillamysgold.com

Regulatory Approvals

- Exhibition of EIS for minimum of 42 days **(Complete)**
- DPIE Public Meeting **(Complete)**
- Submissions received **(Complete)**
- Regis Response to Submissions **(Complete)**
- Assessment and recommendation by Department of Planning, Industry and Environment (DPIE) **(in progress)**
- Independent Planning Commission (IPC) public hearing
- Determination by IPC

