



REGIS RESOURCES LTD

**McPhillamys Gold Project
Community Consultative Committee
22 November 2021**



Agenda

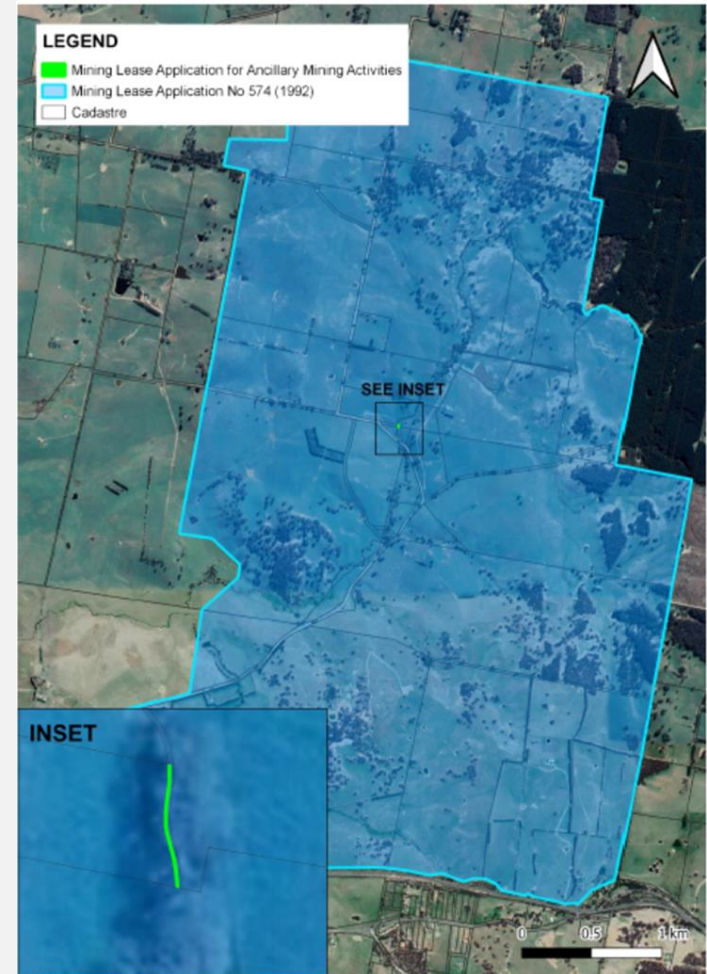
1. Apologies
2. Declaration of pecuniary or other interests
3. Business arising from previous minutes
4. Correspondence
5. McPhillamys Gold Project update
6. Other agenda items
7. General business
8. Questions
9. Next meeting

McPhillamys Project Activities

- COVID-19 restrictions
 - Office to re open 29 November
 - All staff fully vaccinated
- Ongoing environmental monitoring
- Surface Water Licencing
- Construction water supply investigations ongoing
- Landowner Agreements ongoing – Landowner meeting 7 November
- Visual screening ongoing

McPhillamys Project Activities

- Section 9 Application – Not granted
- Section 10 Application - determination commenced, representations invited
- MLA 595 – Right to Negotiate (native title)
 - Small ancillary mining activities mining lease application within the larger lease application area
 - Native title cannot be demonstrated to be extinguished
 - RTN commencing December 2021



Relative Location of Proposed AMAs to Proposed Mining Lease for Minerals

Communication

- Community Information Sheet #15
Sept 2021
- Community Information Sheet #16
scheduled for Dec 2021
- Fortnightly updates -
Blayney Chronicle/email



Local business support

➤ Advertising support for local businesses during Covid 19 restrictions



Above: Amy Gotch from Bi-Rite Blayney

Supporting local businesses

Regis likes to support local businesses such as the Bi-Rite franchise in Blayney.

Owned and operated by the Miskell family, Bi-Rite is always our first port of call for any electrical or home appliances.

Monday to Friday: 9am – 5pm

Click & Collect: <https://www.birite.com.au/>
email: blayney@birite.com.au ph: 63682184



Supporting local business

Covid 19 restrictions have made life very difficult for so many local businesses.

Newman's Service Centre (Caltex Blayney) and The Farm Shop are two great Blayney businesses that we rely on for everything from fuel to fencing wire. They continue to adapt and keep their doors open and we thank them for that!

Below: Adrian Prosper, Caltex Blayney



the FARM SHOP
BLAYNEY

27 Ogilvy Street (PO Box 130)
Blayney NSW 2799

Telephone (02) 6368 4456
Fax (02) 6368 4457
Mobile 0458 445 567
Email the_farmshop@bigpond.com

Your one stop farm shop



Community Christmas Donations



- Blayney Public School
- Blayney High School
- Blayney Platform Arts Hub
- Blayney Can Assist
- Blayney Meals on Wheels
- Blayney Rotary
- Blayney Knitting and Hobby craft Inc
- Blayney Men's Shed
- Bathurst Christmas Miracle Appeal
- Carcoar St Paul's Church Fund
- Central Tablelands Landcare
- Lyndhurst Public School
- Millthorpe Golden Memories Museum
- Newbridge Progress Association

Regulatory Approvals

- Exhibition of EIS for minimum of 42 days **(Complete)**
- DPIE Public Meeting **(Complete)**
- Submissions received **(Complete)**
- Regis Response to Submissions **(Complete)**
- Assessment and recommendation by Department of Planning, Industry and Environment (DPIE) **(in progress)**
- Independent Planning Commission (IPC) public hearing
- Determination by IPC

Farewells and New Faces



