



Community Information Sheet No.3 September 2018

Introduction

The previous Community Information Sheet, distributed in July 2018, provided an update on the McPhillamys *Preliminary Environmental Assessment (PEA)*, which was submitted to the Department of Planning and Environment (DPE).

The PEA provided a detailed description of McPhillamys, based on up-to-date information at the time. It was made available to stakeholders, including our near neighbours, via email and letterbox drops and can be viewed on the DPE website.

The PEA, along with other information about McPhillamys including a copy of the conceptual mine site layout and *Frequently Asked Questions (FAQs)*, can also be viewed on Regis' McPhillamys website at www.mcphillamysgold.com

Project Update

The submission of the PEA represented the first formal step in the development application for McPhillamys and allows the DPE to issue to Regis what were known as Secretary's Environmental Assessment Requirements, or SEARs. A recent change to the naming protocol has removed the word "Secretary's" from this description and hence these requirements are now known as Environmental Assessment Requirements, or EARs. The EARs represent a set of guidelines that Regis must address in its EIS submission.

For example, in assessing the noise impacts of the McPhillamys proposal, Regis must undertake noise surveys and noise modelling in accordance with the standard and/or guidelines stipulated in the EARs so the Regulator can assess the outcomes

in a consistent and accurate manner. In a similar manner the EARs outline the scope for all other aspects of the EIS. For example, surface and ground water, air quality, ecology, rehabilitation, traffic and so on.

Regis is now in the process of confirming all of the work that has been either undertaken or is ongoing at McPhillamys conforms with the EARs.

A copy of the EARs can be found on the DPE website and Regis' www.mcphillamysgold.com website.

Mine Development

The Mine Development comprises all development within the Mine Site, located near Kings Plains. The last update provided a summary of the activities proposed within the Mine Site.

Since then, Regis has been optimising how the mining operation might be scheduled. This includes decisions on the total amount of material that needs to be mined at each stage to ensure that there is enough gold bearing material, or ore, for the processing plant, and more importantly, where the material that does not contain gold needs to be located. The material that does not contain gold, called "waste rock". Waste rock is used to construct areas where gold bearing ore can be stockpiled ready for processing, in walls for the tailings storage facility, waste rock emplacements, roads and the environmental or amenity bunds, which act to protect local residents from potential impacts such as noise and dust (see Figure 3).

This "mine scheduling" process is generally optimised over multiple stages, due to the fact there are many outcomes that need to be

achieved in order to satisfy the safety, environment, community and production requirements of the project.

- Surface and ground water
- Tailings storage facility (TSF)
- Use of cyanide
- Noise and air quality

‘Surface and ground water’ and the ‘use of cyanide’ are the two key topics for the first two open days, as the TSF design and noise and air quality modelling need to be further advanced before any realistic outcomes can be assessed and therefore discussed.

Pipeline Development

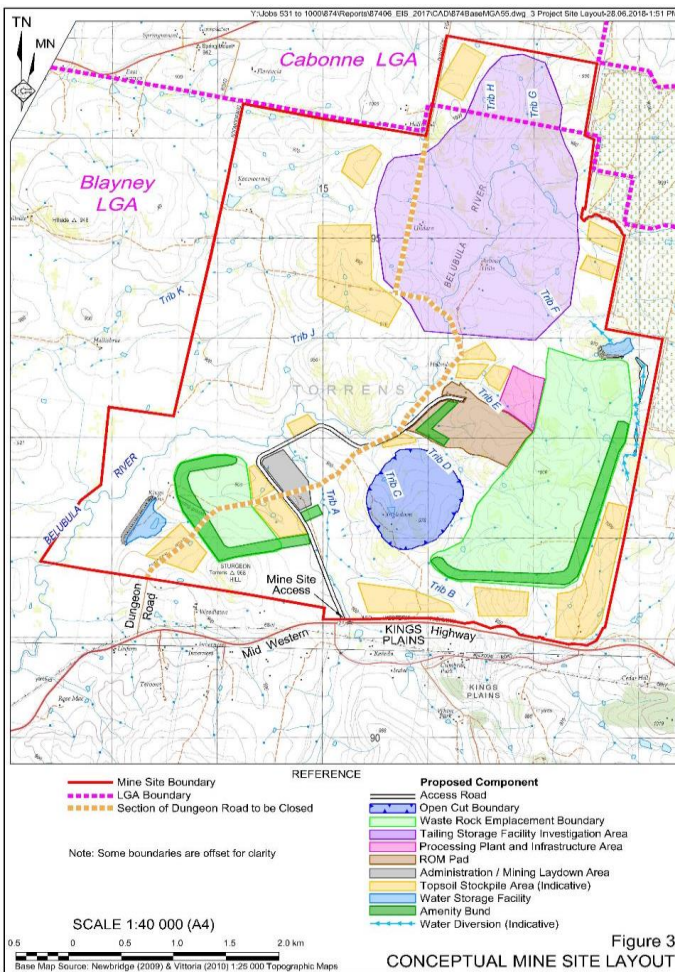
This comprises all development associated with transferring surplus water from Springvale to McPhillamys. This includes the construction and operation of a buried pipeline which would be approximately 500mm in diameter, a series of pump stations, environmental assessments and the formation of easements.

Regis has been working on a pipeline corridor from Springvale to McPhillamys over a distance of approximately 90km. A preliminary conceptual design was adopted in 2017 when work on the pipeline route commenced and focussed on existing power line and gas pipeline easements. This corridor passed through over 90 privately owned properties.

Since then, Regis has optimised the proposed corridor many times in an attempt to minimise the impact to privately owned properties and the environment. The optimised corridor now includes some of the existing power line and gas pipeline easements along with the use of forestry tracks, road reserves and a greatly reduced number of privately-owned properties impacted (<20).

Although engineering and detailed design is yet to be completed, the construction material for the pipe is expected to be a combination of High-Density Polyethylene (HDPE), Glass Fibre Reinforced Plastic (GRP) and Concrete Lined Ductile Iron (DICTL). The pipeline would be buried with the top of the pipe a minimum depth of 800 mm from surface.

Additional ancillary pipeline infrastructure will include pumping stations, water storage tanks, isolation, air, scour and pressure reducing valves,



After each of these stages, there may be a need to re-assess some of the impacts. For example, noise levels or visual impact etc.

This process therefore takes some time and the final answers, once optimised, are what are presented in the EIS submission.

That said, some potential impacts of the McPhillamys proposal are of concern to local residents and although the final answers may not be fully understood until the respective EIS studies have been completed in accordance with the EARs, Regis intends to provide as much ‘up-to-date’ information as we can on key topics in Community Open Days that are planned to occur this month and in the future (see the box below).

Without dismissing the importance of all the other aspects of the McPhillamys proposal, the key topics most frequently asked about by local residents at present are:

power supply and controls and a communications system.

As a key infrastructure component of the McPhillamys project, the EIS will also include the Pipeline Development.

Community Open Days

Regis proposes to run two Community Open Days the first on **Tuesday 25 September between 1pm and 8pm 2018** and the second on **Wednesday 26 September 2018 between 1pm and 8pm**. The open days will be held at the **Blayney Community Centre** and will be the first of a series of open days and meetings that are planned to take place in order to allow the community to learn more about McPhillamys.

Each of the open days will include a focus on key topics that represent significant concerns of the community. The first two open days will focus on potential water impacts of McPhillamys in the area and the use of cyanide to recover gold.

Regis are planning to have a representative from the consultancy firm who have undertaken the surface and ground water studies available to answer questions over the two days.

Community Consultation

The stakeholder consultation program will continue throughout the EIS process. The first phase of consultation involved meetings with near neighbours, Blayney community and other stakeholders to provide information about the project and the EIS process, and to capture people's issues and concerns relative to the project. Regis will be conducting further consultation during September 2018 and October 2018. If you would like to meet with Regis Resources, please contact Chris Roach to arrange a suitable time.

In addition to this, Regis has engaged Hansen Bailey to complete a Social Impact Assessment (SIA) for the project in accordance with the NSW Social Impact Assessment Guideline (DPE 2017). The SIA is separate from Regis' community consultation and considers the direct and indirect impacts arising from the project that affect people and their communities at all stages of the project.

In April 2018, Hansen Bailey representatives conducted meetings with a number of local residents, including Kings Plains and Guyong road residents to inform the SIA Scoping Study.

During October 2018, Hansen Bailey representatives will be conducting further meetings with local residents. Hansen Bailey will also be facilitating a series of small focus group meetings with representatives of the broader Blayney community. The purpose of this engagement is to validate existing social baseline data, understand resident values and aspirations and discuss the potential impacts and opportunities associated with the project for near neighbours and the community of Blayney Shire.

To register your interest in participating in a focus group please contact Chris Roach at Regis Resources, details are below.

Community Consultative Committee

The project EARs include a requirement for the establishment of a Community Consultative Committee (CCC). The purpose of the CCC is to provide a forum for discussion between Regis and representatives of the community, stakeholder groups and Blayney Shire Council on issues directly relating to the project.

The Department of Planning and Environment (DPE) will appoint an independent chairperson for the CCC. The independent chairperson will oversee the selection process for the community representatives of the CCC.

Further information on the formation of the CCC will be made available in the near future.

Want to know more?

If you have any questions or would like to speak to anyone about the McPhillamys Gold Project, call into our office at 57 Adelaide Street, Blayney or contact Chris Roach (Stakeholder Engagement Officer) on:

Tel: 02 6368 4100

Mob: 0416 745 699

Email: croach@regisresources.com